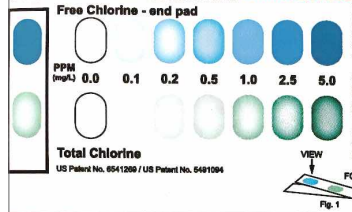


WaterWorks™ School Kit Color Chart and Instruction Card

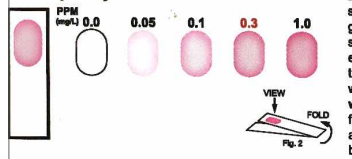
Part Number 487995

Free & Total Chlorine 4.0 is USEPA MCL



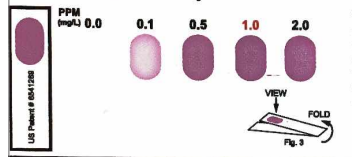
TEST PROCEDURE:
Dip one test strip into at least a 250ml (about 10oz) water sample with a constant, gentle back and forth motion for 10 seconds. Remove the strip and shake once, briskly, to remove excess water. Wait 15 seconds and match Free Chlorine & Total Chlorine color with closest color. For best color matching, fold the white plastic handle under the aperture so it produces a white viewing background (Fig 1).

Iron (Fe²⁺)



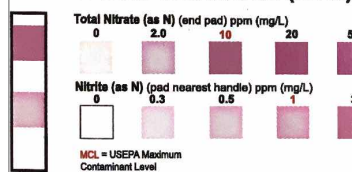
TEST PROCEDURE:
Dip one test strip into a 200ml (8oz) water sample for 5 seconds with a constant, gentle back and forth motion. Remove the strip and shake once, briskly, to remove excess water. Wait 15 seconds then view through the aperture (see Figure 1) to match with closest color. Complete color matching within 15 seconds. For best color matching, fold the white plastic handle under the aperture so it produces a white viewing background (Fig 2).

Copper (Cu¹⁺/Cu²⁺)



TEST PROCEDURE:
Dip one test strip into a 200ml (8oz) water sample for 15 seconds with a constant, gentle back and forth motion. Remove the strip and shake once, briskly, to remove excess water. Wait 30 seconds then view through the aperture (see figure 1) to match with closest color. Complete color matching within 15 seconds. For best color matching, fold the white plastic handle under the aperture so it produces a white viewing background (Fig 3).

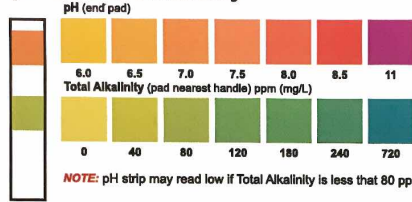
Total Nitrate and Nitrite (as N)



TEST PROCEDURE:
Dip one test strip into water sample for 2 seconds, remove, hold level, and wait 1 minute (wait 2 minutes if water temp is very cold or below 55°F/13°C). Match colors and record results. Colors are stable for 2 minutes.

1

pH & Total Alkalinity



TEST PROCEDURE:
Dip one test strip into a water sample for 10 seconds without motion. Remove and wait 15 seconds. Match colors for pH and Total Alkalinity before 30 seconds have passed.

NOTE: pH strip may read low if Total Alkalinity is less than 80 ppm.

Total Hardness



TEST PROCEDURE:
Dip one test strip into a water sample for 3 seconds, remove, and immediately match colors for Total Hardness.

Test Specifications

Test	Range	Sensitivity	EPA Recommendation
Free Chlorine	0 to 5.0	0.1	0.2 to 4.0 ppm
Total Chlorine	0 to 5.0	0.1	Less than 4.0 ppm
Iron	0.0 to 1 ppm	0.05 ppm	Less than 0.3 ppm**
Copper	0.0 to 2 ppm	0.1 ppm	Less than 1.3 ppm
Total Nitrate (as N)	0 to 50 ppm	2.0 ppm	Less than 10 ppm
Nitrite (as N)	0 to 3.0 ppm	0.3 ppm	Less than 1 ppm
pH	6.0 to 11.0	0.5	6.5 to 8.5
Total Hardness	0 to 425 ppm	50 ppm	50 to 125 ppm*

*Not included in EPA standards at this time.

**Included in EPA Secondary Standards.

For Technical Assistance, Call: 1-803-329-0162



SENSAFE.COM

©2015 Industrial Test Systems, Inc.
SENSAFE® is a registered trademark of
Industrial Test Systems, Inc., Rock Hill, SC USA



R0915A-2-SK

2